

Pink Abalone

Haliotis corrugata

Pink abalone are identified by their highly corrugated shell surface and sharply scalloped edge. Their bodies are black with an intricately mottled, lace-like black and white epipodium.

They sport 2 to 4 highly elevated open respiratory pores. Pink abalone are most common from about 20 to 70 feet deep, on rocky reefs in areas with giant kelp beds.

POPULATION STATUS

Declined

MAXIMUM SIZE

Up to 9.5 inches³

LIFESPAN

Up to 30 years¹

DEPTH RANGE

20 – 180 feet³

GEOGRAPHIC RANGE

Point Conception, CA to
Bahia Tortuga, MX²

SHELL DESCRIPTION

Green to reddish brown.
Highly corrugated texture.²



BODY DESCRIPTION

Body & tentacles black, epipodium black and white, mottled and lace-like.²

PREFERRED HABITAT

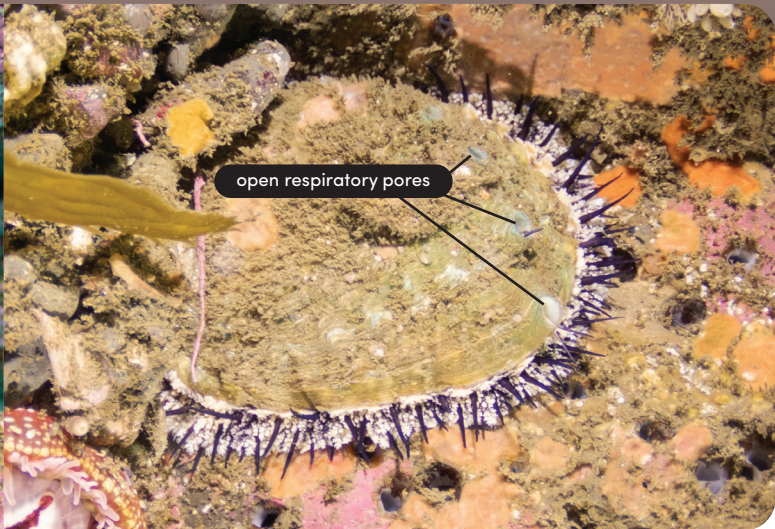
Rocky reefs in areas with giant kelp beds.³

HARVEST INFORMATION

Recreational & commercial wild harvest is prohibited.



An adult pink abalone in a boulder crevice.

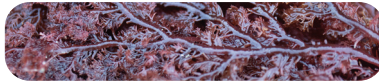


A pink abalone seen from above in 45 feet of water off San Diego, CA.
All Images: Oriana Poindexter

ASSOCIATED ALGAL SPECIES¹



GIANT KELP
Macrocystis pyrifera



SEA COMB
Plocamium pacificum



SOUTHERN SEA PALM
Eisenia arborea

REFERENCES

- 1 CA Dept of Fish & Game, Abalone Recovery & Mgmt Plan, 2005.
2 Cox, 1962. 3 Geiger & Owen, 2012.



**National
Marine Sanctuary
Foundation**



NATIONAL MARINE
SANCTUARIES
CHANNEL ISLANDS



**NOAA
FISHERIES**



**PELAGIC
PROJECTS**